



COMPANY PROFILE



ITALIAN MANUFACTURER SINCE 1969



COMPANY'S FOUNDATION

GEMELS S.p.A. was founded in 1969 as a Company specialized in the designing and manufacturing of ball valves and quick couplings from 1/4" up to 42".

GEMELS S.p.A. has become a worldwide leader in the industrial & hydraulic field and, since 2010, has started to focalize and to invest more and more also in the Oil & Gas field.

GEMELS S.p.A. has also introduced into its range new products regarding Green Power application, as ELECTRIC MOTORS and new other forthcoming projects for the electrification of equipment and machines.

WHERE WE ARE

GEMELS S.p.A. is located in the middle of North Italy, less than 50 km from Milan.

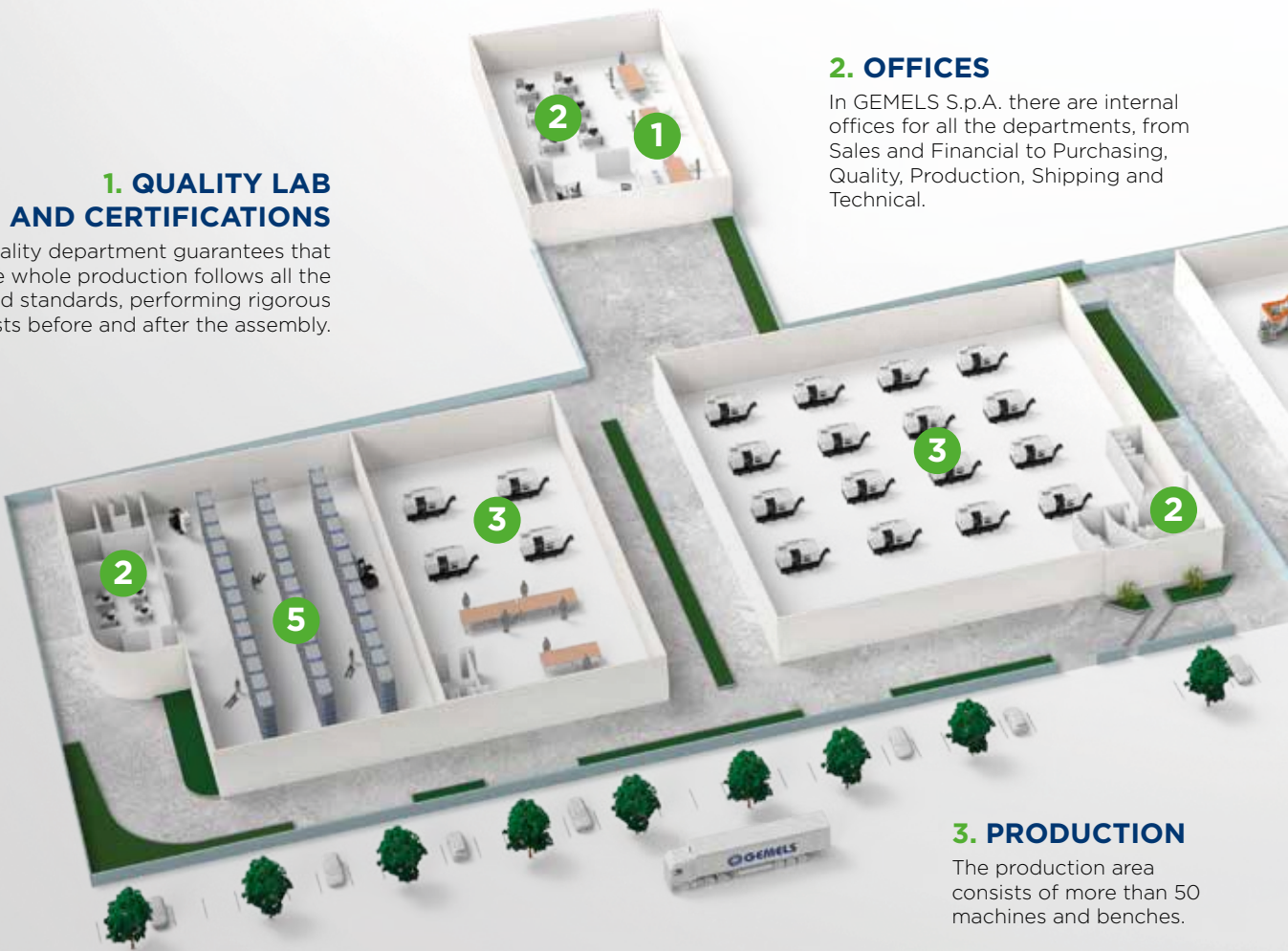
Address:
Via Gambirasio, 20/22 24069
Trescore Balneario (Bergamo)
ITALY

GEMELS NORTH AMERICA INC is located in Dayton, with office and warehouse supplying the American market.

Address:
Billing Address
1800 West Loop South
Suite 1740 - Houston, TX 77027
Warehouse & Distribution Center
35 Watterson St.
Dayton, OH 45417

HEADQUARTERS

GEMELS S.p.A. covers more than 12.500 m², between indoor and outdoor area.



1. QUALITY LAB AND CERTIFICATIONS

The quality department guarantees that the whole production follows all the required standards, performing rigorous tests before and after the assembly.

2. OFFICES

In GEMELS S.p.A. there are internal offices for all the departments, from Sales and Financial to Purchasing, Quality, Production, Shipping and Technical.

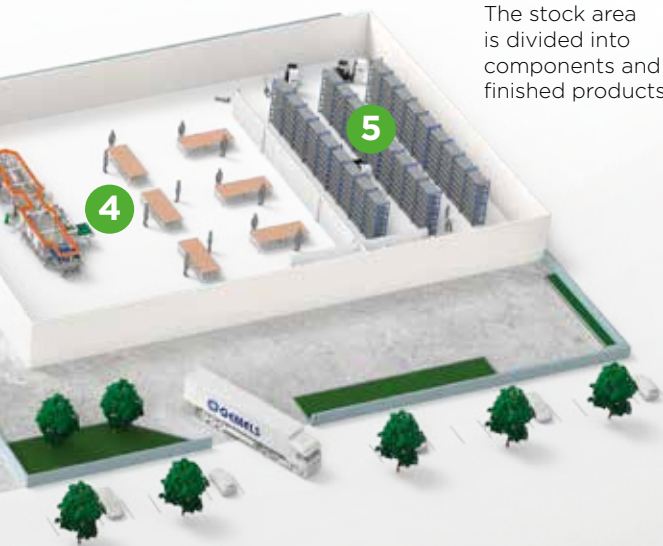
3. PRODUCTION

The production area consists of more than 50 machines and benches.



5. STOCK AND SHIPPING

The stock area is divided into components and finished products.



4. ASSEMBLING

The assembling area includes manual and automatic lines, where valves are 100% tested.

OUR HISTORY

In 1969, in the center of Trescore Balneario, Angelo Facchinetti gave life to his “Officina Meccanica”. In 1988 the Company changed its name in **GEMELS** and in the ‘90s the first ball valve model GE2 was realized. The first shipment abroad, in 1997, highlighted the first step of the internationalization process. In 2004 **GEMELS** bought two new buildings, next to the first one, to increase its production. In 2010 the Company made the first investments in the Oil&Gas market, obtaining API 6D Certification two years later. In 2015, becoming always more aware of health and safety themes, **GEMELS** obtained ISO 18001 and OHSAS 14001 Certifications. The first machine for the automatic assembly of GE valves was introduced in 2017. In 2018 **GEMELS** widened its product range by developing Quick Couplings. In 2020 the Company changed its business name from **GEMELS** to **GEMELS S.p.A.** and the first branch in USA, **Gemels North America Inc.** based in Dayton, was officially opened.



GEMELS S.p.A. is not a Community for everybody. If you like impossible challenges, if you would like to become a champion and you are an honest person, you could be part of our reality. Our distinctive value is fully understood by those who has made a direct experience in GEMELS S.p.A..

GLOBAL PRESENCE

100 COUNTRIES

GEMELS S.p.A. has a strong global presence with a network of distributors and partners all over the world. Reaching almost 100 countries, the Company is able to guarantee the faster solution to all the customers across the five continents.



PHILOSOPHY

GEMELS S.p.A. founds its philosophy on being a Company completely different from the other ones in every aspect for its courage and honesty. This philosophy is not based on the enrichment of the Company management, but on sharing it with each colleague, who work with passion looking for a continuous improvement, growth and perfection, and his/her family. The real success of **GEMELS S.p.A.** is what we inspire in our colleagues' lives, which becomes then their personal success too. We base our philosophy on a creative long-period idea, where women hold high-profile positions, generating a chain of values that reaches their children, who, once included in the Company's reality, will bring the learned culture. The value given to people that are part of our Community is essential: they are the one who make the Company. To fully understand **GEMELS** philosophy, which is completely out of the ordinary, as far as you try, is often difficult, almost impossible.



SUSTAINABILITY

For **GEMELS S.p.A.** sustainability is a priority: the Company always takes care of ESG themes (Environmental Social Governance).

GEMELS S.p.A. supports the basics of the European Green Deal. This agreement, among its points, not only does it deal with the problem of climate change, but also it concerns workers and communities support, guaranteeing social protection and respect for human rights. Among the various aspects related to social issues, **GEMELS S.p.A.** puts great emphasis on the topic of welfare, as well as on employee engagement, gender diversity, responsible and sustainable supply chain.



ESG

The Company values its people (PEOPLE FIRST): it has always adopted this approach, as people are the one who make the Company. **GEMELS S.p.A.** has always worked hard to spread a 'COMPANY CULTURE', both internally and externally, that gives value and defends people, protects their mental and physical health and promotes their development.

Another goal is the female quota, currently up to 40% of the colleagues.

GEMELS S.p.A. philosophy follows the principles of TPS, based on lean production, 5S, pursuit of the excellence in quality and continuous improvements (kaizen).





“ WHEN YOU WORK, REMIND: YOUR FAMILY IS WAITING FOR YOU AT HOME! ”

GEMELS safety

One of **GEMELS S.p.A.** main focuses is the promotion and spread of a Safety Culture in the workplace. One of our mottos is: WHEN YOU WORK, REMIND: YOUR FAMILY IS WAITING FOR YOU AT HOME!

In order to spread safety awareness to all the partners and colleagues, we have introduced some special labels on our equipment and machinery with the “**GEMELS SAFETY**” brand. These labels are printed internally by our quality and safety department. **GEMELS S.p.A.** is ISO 45001 certified.

GEMELS Supply Support Center

Regarding the supply chain, the Company is committed to increasing awareness of themes such as the transparency and honesty of relationships. Since 2014, **GEMELS S.p.A.** has introduced a designated office with the aim of making continuous improvements to the quality of its products, thanks to a close collaboration between the suppliers and the Company: it is called GSSC (GEMELS Supply Support Center).

GEMELS ENVIRONMENT

We are sensitive to the environmental issues and to the impact that production activities have on the environment and territory in terms of natural gas emissions, energy savings, green innovation, soil protection and biodiversity. **GEMELS S.p.A.** is committed to inspiring its workers' environmental awareness by reducing the quantity of waste produced, by optimizing recycling and by promoting the reduction of energy consumption thanks to our production cycles efficiency. The Company dedicates few hours each year to environmental and social sustainability, supporting different local and national charitable organizations. **GEMELS S.p.A.** is ISO 14001 certified.



PATENT

1

BALL VALVES WITH INTEGRATED QUICK COUPLINGS

LEAN & COMPACT SOLUTIONS

Many components reduced to only one single item

BETTER & GUARANTEED PERFORMANCES

One single body incorporates valve and coupling, that means no more leakages and contaminations of the system and a more uniform flow

VARIOUS & CUSTOMIZED SOLUTIONS

Valve available in different threads and coupling standards according to request
ISO A / ISO B / FLAT FACE / N / NV / PUSH-PULL

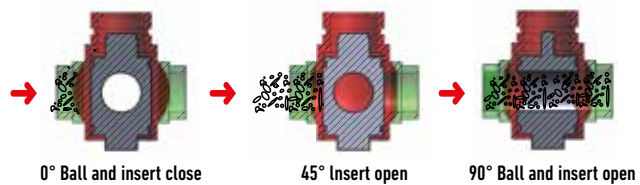


PATENT

2

DIRTY GAS APPLICATION

For some critical applications with dirty gas, especially in CNG field, **GEMELS S.p.A.** patented a special insert with an internal stem to avoid completely the damaging of ball seats.



DESIGN AND PATENT

Thanks to its philosophy, based on lean production, **GEMELS S.p.A.** has specialized over the years in the design and production of valves for special & critical applications, providing customers with lean solutions and customized valves.

Thanks to the R&D department rigorous study of advanced and innovative solutions, **GEMELS S.p.A.** has also obtained 4 patents in Italy and Europe.



PATENT

3

GEMFY

Our GEMFY Valve is studied for high-pressure application, ensuring:

- lower torque values.
- smaller & cheaper actuator.
- absence of an external bypass valve.
- more open/dose cycles.
- longer life of the ball valve.
- easier opening after long period of closing.

PATENT

4

FULLY WELDED

The patent is applicable to FULLY WELDED SBT valves, where the flanges are welded to the body (and not bolted).

The patent allows to assemble and test the valve more safely, quickly and cheaply.

Thanks to the special grooves studied, which permit mounting and testing the body and the flanges, it is possible to perform the high-pressure leak test without performing the first weld overlay.

That is both time-saving and money-saving.

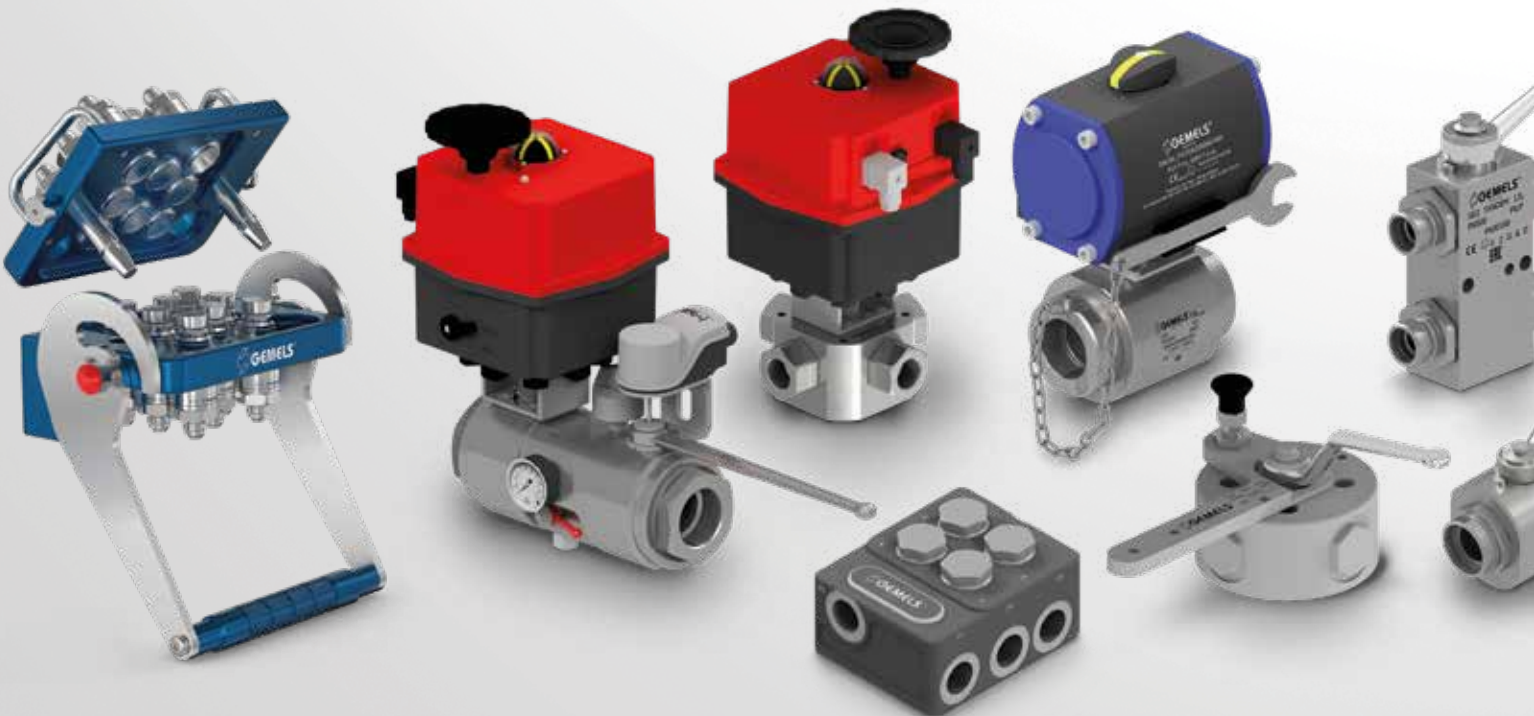
R&D

In **GEMELS S.p.A. R&D Department**, our technicians study innovative solutions. In the last years, the Company has been focusing on GREEN POWER ENERGY with new projects in the ELECTRIC field. **GEMELS S.p.A.** introduced three-phase synchronous ELECTRIC MOTORS and other new technological products.

APPLICATIONS & SOLUTIONS

GEMELS S.p.A. electric motors are studied for different applications: agriculture, earth moving, construction, cleaning, material handling, lifting equipment, transfer carts, automotive, e-mobility and many others.

CUSTOMIZED Series

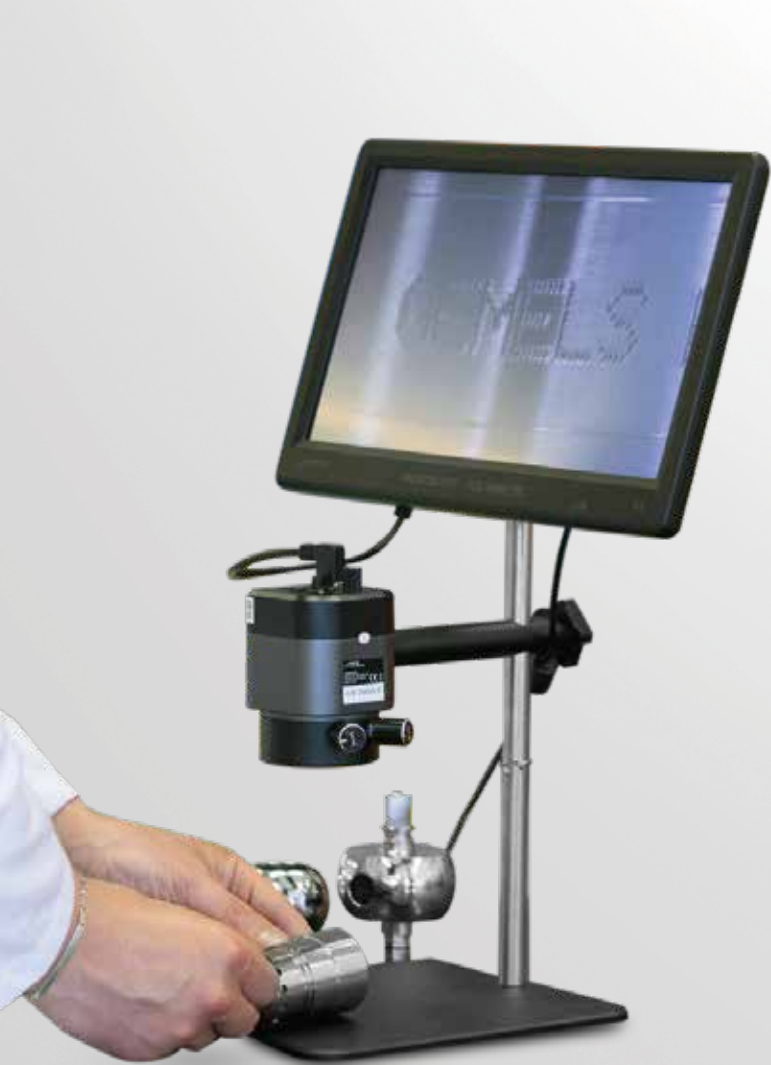




LEAN CUSTOMIZED



GEMELS S.p.A. studies and designs special lean customized solutions for its customers based on specific requests. Thanks to the close collaboration between **GEMELS S.p.A.** technical department and the engineering department of the customers, we are able to study the best and most suitable solution for the application where our products will be mounted. **GEMELS S.p.A.** can realize prototypes and samples. Our customized solutions can range over different fields, like agriculture, fire-fighting, construction and building, lifting, automotive, steel plant, heavy equipment and marine.



QUALITY LAB

INTERNAL LABORATORY

The main characteristic of **GEMELS S.p.A.** ball valves is the excellence in quality, which is possible thanks to the accurate selection of raw materials, staff and partners made by the management.

Moreover, in the Internal Laboratory, **GEMELS S.p.A.** qualified personnel tests the valves' lifespan, simulating critical applications and conditions with special machineries (burst test, impulse test, salt spray test, climatic room, Tridimensional check, microscope, hardness gauge, bidimensional gauge) to constantly ensure the highest quality.

QUALITY MANAGEMENT SYSTEM

ISO 9001

HEALTH & SAFETY

ISO 45001

ENVIRONMENTAL
MANAGEMENT SYSTEMS

ISO 14001



PRODUCTS CERTIFICATIONS

- CE PED Mod. H
- UKCA PER Mod. H
- ATEX
- FIRE SAFE
- DNV
- FUGITIVE EMISSION
- TA LUFT
- SIL 3
- EAC
- CRN

PRODUCTION

MORE THAN 60.000 VALVES PER MONTH

The production area, where **GEMELS S.p.A.** produces more than 60.000 ball valves per month, consists of more than 50 machines, including automatic numerical controlled machines and semi-automatic ones, among which CNC, lathes, transfers, boring machines, machining centres etc.



MADE IN
ITALY



These technologies and the high qualified personnel help **GEMELS S.p.A.** to achieve the quality standards and excellence, obtaining the required technical characteristics and gaining trustworthiness in the market.



The whole production follows all the required standards, performing rigorous tests after both the production and the assembly. After that, all valves are 100% tested using specific test benches.

MANUAL ASSEMBLING

There is the 'historical' manual assembly line for the assembly of special models and of big size ball valves up to 42".

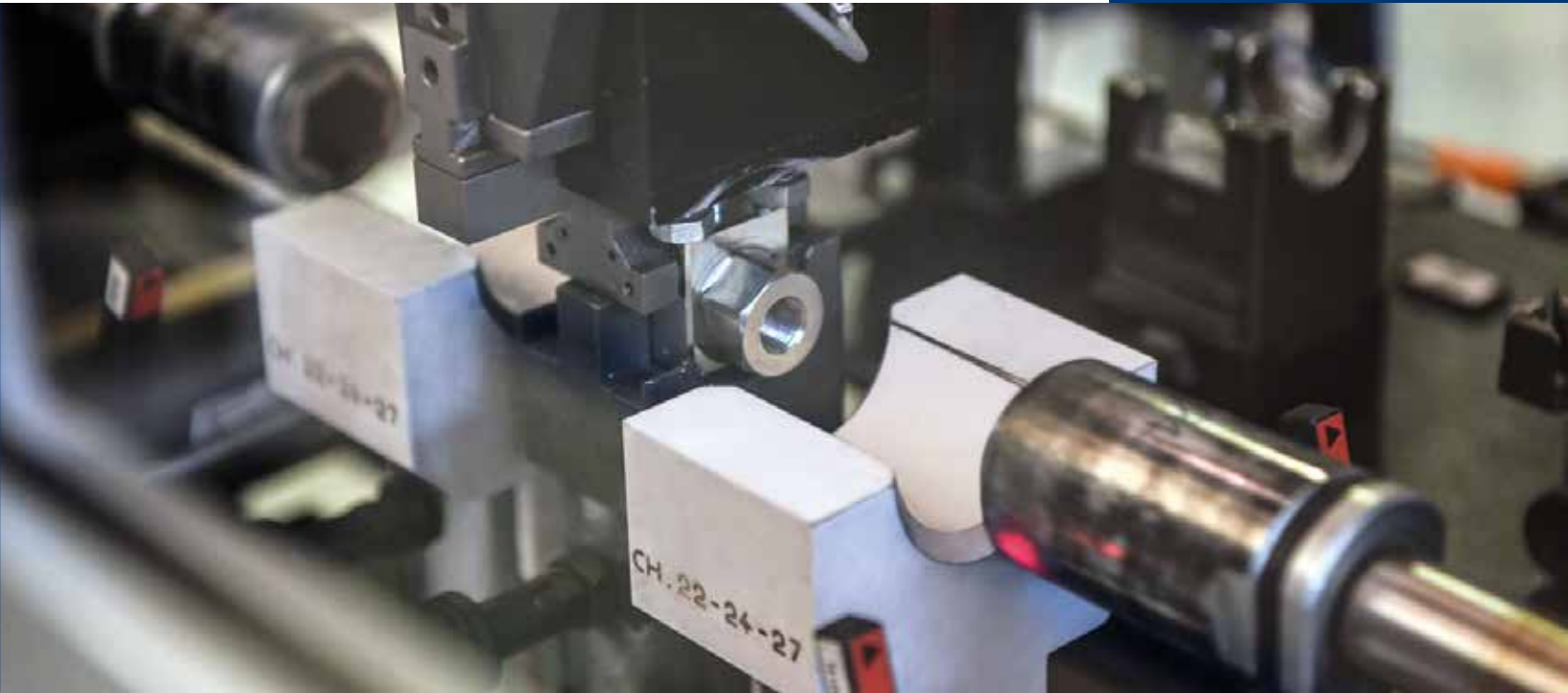


AUTOMATIC ASSEMBLING

ASSEMBLING AND TESTING LINE

To further guarantee the quality of our products, at the beginning of 2017 we installed a new automatic assembly line for the mounting and testing of the ball valves.





This machine permits the assembly and the relative test of all the standard valves up to 1". For each assembled valve an automatic report that shows every step of the process is made, thanks to the pictures shot by the cameras placed in each station of the machine.





STOCK AND SHIPPING

FAST DELIVERY

GEMELS' warehouse of 2.000 m² is divided between components and finished products.



Thanks to a big stock, **GEMELS S.p.A.** is able to guarantee a wide range of products with fast delivery.

THE RANGE





ELECTRIC POWER SUPPLY

GEMELS series of electric motors, designed and produced in Italy, consists in AC three-phase torque motors, available in different models with power from 2 kW to 100 kW, from 48V to 400V, and up to 10.000 RPM.

Motors can be designed for traction solutions, Hydraulic power units (pump interfaces) and with standard flanges (IEC/NEMA), air and liquid cooling, power cables with motor connection box or directly connected to the winding.



HIGH PRESSURE VALVES FOR HYDRAULIC FIELD

For hydraulic/industrial field, since 50 years **GEMELS** produces high pressure ball valves, known all over the world as synonym of maximum reliability and high quality. **GEMELS** is one of the World Leader Manufacturer.

Thanks to a full package that includes a wide variety of models and to special and customized solutions, our clients and distributors use our valves for different application, like: agriculture, automotive, naval, firefighting, CNG.

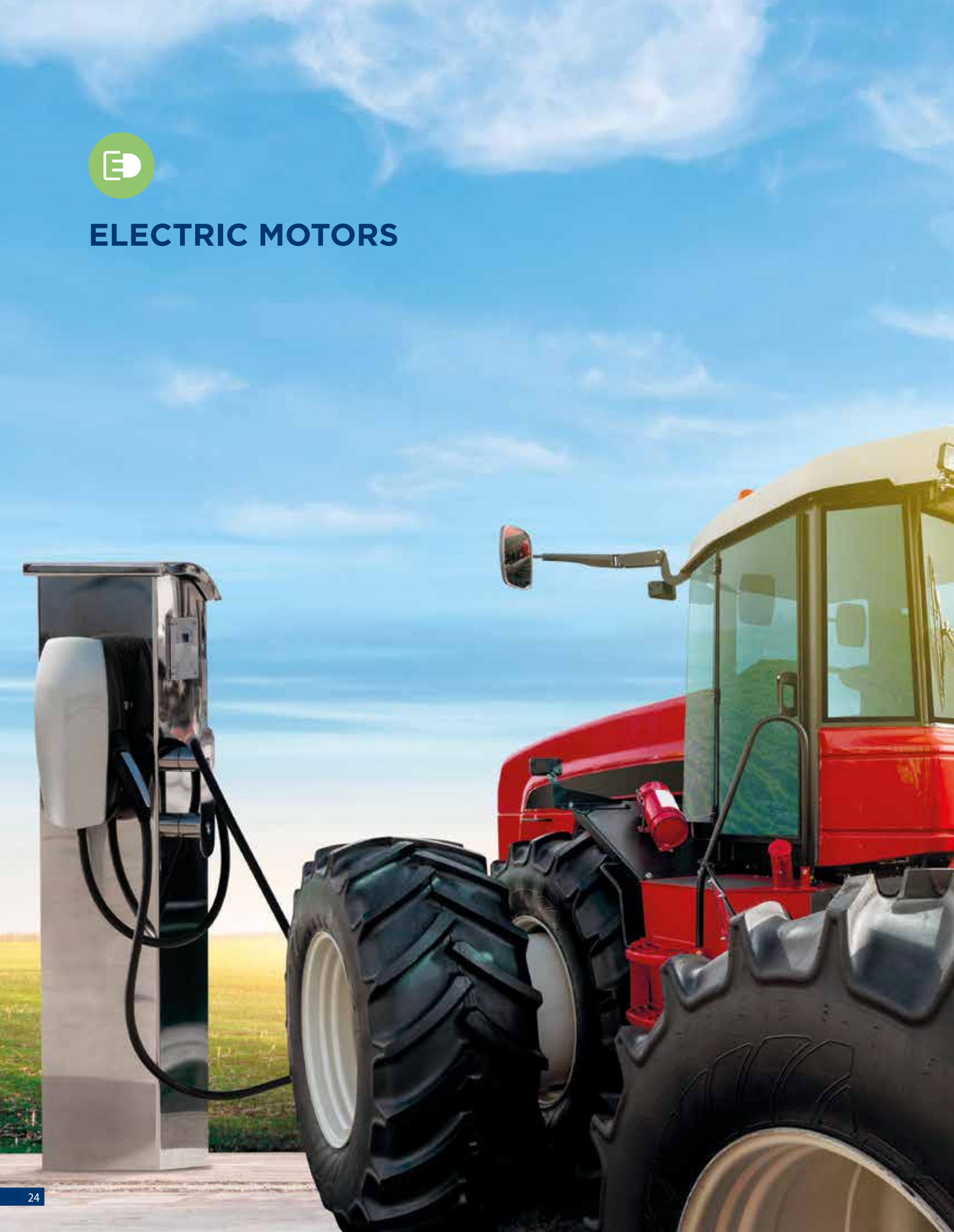


FLOATING & TRUNNION DESIGN

For Oil&Gas fields, **GEMELS** produces ball valves from 1/4" up to 36", ensuring material 100% Made in Italy/EU. **GEMELS** valves are in accordance to the international norms and to the specifications of the biggest global players in downstream, midstream e upstream fields, both for onshore and offshore application. In addition to manual valves, cooperating with the most important manufacturers of actuators, **GEMELS** supplies also the complete package with pneumatic, electric, Gas-Over-Oil, hydraulic actuators and HIPPS system.



ELECTRIC MOTORS



ELECTRIC MOTORS



GREEN POWER

Modular aluminum or steel structure

- from 2 kW to 100 kW
- from 48V to 400V
- up to 10.000 RPM



HYDRAULIC QUICK COUPLINGS



HYDRAULIC QUICK COUPLINGS



MULTI COUPLINGS



MGW (plate mounting)

- Carbon Steel and Stainless Steel
- Type: Quick couplings
- Model: MGW - Quick couplings flat face for plate mounting
- Sizes: from DN13
- Pressure: up to PN420



FLAT FACE

- Carbon Steel and Stainless Steel
- Type: Quick Couplings
- Models: ISO 16028
- Sizes: from DN6 up to DN25
- Pressure: up to PN420



MGW AP (plate mounting)

- Carbon Steel
- Type: Quick Couplings
- Model: MGW AP - Quick couplings flat face connection under pressure for plate mounting
- Sizes: from DN6 up to DN25
- Pressure: up to PN420



VGF

- Carbon Steel
- Type: Quick Couplings
- Models: Flat Face Screw Coupling
- Sizes: from DN13 up to DN32
- Pressure: up to PN480



ISO A

- Carbon Steel and Stainless Steel
- Type: Quick Couplings
- Models: ISO 7241/A
- Sizes: from DN6 up to DN50
- Pressure: up to PN420



FFAP

- Carbon Steel
- Type: Quick Couplings
- Models: ISO 16028
- Sizes: from DN6 up to DN25
- Pressure: up to PN420



PUSH PULL AGRI

- Carbon Steel and Stainless Steel
- Type: Quick Couplings
- Models: ISO 7241/A
PUSH-PULL AGRICULTURE
- Sizes: DN12,5
- Pressure: up to PN250



FFAP PLATE CONNECTION

- Carbon Steel
- Type: Quick Couplings
- Models: ISO 16028 FLAT FACE CONNECTION UNDER PRESSURE
- Sizes: from DN10 up to DN25
- Pressure: up to PN420



PUSH PULL AGRI DV

- Carbon Steel and Stainless Steel
- Type: Quick Couplings
- Models: PUSH PULL AGRI DV
ISO 7241/A
- Sizes: DN12,5
- Pressure: up to PN250

HYDRAULIC QUICK COUPLINGS



PUSH PULL

- Carbon Steel
- Type: Quick Couplings
- Models: ISO 7241/A
- Sizes: from DN10 up to DN25
- Pressure: up to PN420



ISO B

- Carbon Steel and Stainless Steel
- Type: Quick Couplings
- Models: ISO 7241/B
- Sizes: from DN6 up to DN50
- Pressure: up to PN420



PUSH PULL N

- Carbon Steel
- Type: Quick Couplings
- Models: ISO 7241/A PUSH-PULL BALL ISO 5675 N
- Sizes: from DN13
- Pressure: up to PN350



N

- Carbon Steel
- Type: Quick Couplings
- Models: ISO 5675
- Sizes: from DN6 up to DN25
- Pressure: up to PN350



PUSH PULL NV

- Carbon Steel
- Type: Quick Couplings
- Models: ISO 7241/A PUSH-PULL BALL ISO 5675 NV
- Sizes: from DN10-DN13
- Pressure: up to PN420



NV

- Carbon Steel
- Type: Quick Couplings
- Models: ISO 5675
- Sizes: from DN6 up to DN25
- Pressure: up to PN350



VGN

- Carbon Steel
- Type: Quick Couplings
- Models: VGN ISO 5675 ISO 7241/A
- Sizes: DN12,5
- Pressure: up to PN350



BGF

- Carbon Steel
- Type: Quick Couplings
- Models: ISO 5676
- Sizes: from DN10 up to DN13
- Pressure: up to PN210



DV

- Carbon Steel
- Type: Quick Couplings
- Models: ISO 7241/A - PUSH-PULL
- Sizes: from DN13 up to DN20
- Pressure: up to PN350



VGA

- Carbon Steel and Stainless Steel
- Type: Quick Couplings
- Models: ISO 14541
- Sizes: from DN6 up to DN25
- Pressure: up to PN420



VGB

- Carbon Steel
- Type: Quick Couplings
- Models: ISO 14540
- Sizes: from DN6 up to DN10
- Pressure: up to PN700



DG

- Carbon Steel
- Type: Quick Couplings
- Models: ISO 15171-1
- Sizes: from DN6
- Pressure: up to PN500



GUS

- Carbon Steel and Stainless Steel and Brass
- Type: Quick Couplings
- Models: GUS - US MARKET
- Sizes: from DN6 to DN40
- Pressure: up to PN270



GE2 FF*

- Carbon Steel
- Model: Ball Valve GE2 with Integrated Quick Coupling FLAT FACE
- Sizes: from DN10 up to DN25
- Pressure: up to PN420

GE2 A*

- Carbon Steel
- Model: Ball Valve GE2 with Integrated Quick Coupling ISO A
- Sizes: from DN10 up to DN25
- Pressure: up to PN420

GE2 PP*

- Carbon Steel
- Model: Ball Valve GE2 with Integrated Quick Coupling PUSH-PULL
- Sizes: from DN10 up to DN25
- Pressure: up to PN420

GE2 VGA*

- Carbon Steel
- Model: Ball Valve GE2 with Integrated Quick Coupling VGA
- Sizes: from DN10 up to DN25
- Pressure: up to PN420

* patent



GV2/GV3

- Carbon Steel
- Model: Ball Valve GV2 with Integrated Quick Coupling FLAT FACE
- Sizes: from DN10 up to DN32
- Pressure: up to PN500
- Model: Ball Valve GV2 with Integrated Quick Coupling VGF
- Sizes: from DN10 up to DN32
- Pressure: up to PN500



HYDRAULIC BALL VALVES



HYDRAULIC BALL VALVES



CUSTOMIZED LEAN SOLUTION



GEM

- Carbon Steel and Stainless Steel
- Type: ball valve 2 way
- Sizes: DN6
- Ends: BSP-NPT-SAE
- Pressure: up to PN500



GH2

- Stainless Steel
- Type: ball valve 2 way high cycles
- Sizes: from DN6 up to DN25
- Ends: BSP-NPT-SAE
- Pressure: up to PN1000



GE1

- Carbon Steel
- Type: ball valve 2 way
- Sizes: from DN6 up to DN13
- Ends: BSP-NPT-SAE
- Pressure: up to PN500

HYDRAULIC BALL VALVES


GE2

- Carbon Steel and Stainless Steel
- Type: ball valve 2 way
- Sizes: from DN6 up to DN25
- Ends: BSP-NPT-SAE-DIN
- Pressure: up to PN500


GE3K

- Carbon Steel and Stainless Steel
- Type: ball valve 3 way special seats, zero leakage
- Sizes: from DN6 up to DN25
- Ends: BSP-NPT-SAE
- Pressure: up to PN500


GE2 HC

- Carbon Steel and Stainless Steel
- Type: ball valve 2 way high cycles
- Sizes: from DN6 up to DN32
- Ends: BSP-NPT-SAE
- Pressure: up to PN500


GEF

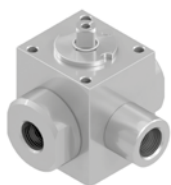
- Carbon Steel and Stainless Steel
- Type: ball valve 2 way
- Sizes: from DN13 up to DN25
- Ends: ISO6162-1/-2 SAEJ518-1/-2
- Pressure: up to PN420 / S6000


GE3

- Carbon Steel and Stainless Steel
- Type: ball valve 3 way
- Sizes: from DN6 up to DN25
- Ends: BSP-NPT-SAE-DIN
- Pressure: up to PN500


GES

- Carbon Steel and Stainless Steel
- Type: ball valve 2 way
- Sizes: from DN13 up to DN25
- Ends: SAE J518
- Pressure: up to PN420 / S6000


GE3 HC

- Carbon Steel and Stainless Steel
- Type: ball valve 3 way high cycles
- Sizes: from DN10 up to DN25
- Ends: BSP-NPT-SAE
- Pressure: up to PN500


GEF-S

- Carbon Steel and Stainless Steel
- Type: ball valve 2 way
- Sizes: from DN13 up to DN25
- Ends: ISO6162-1/-2 SAEJ518-1/-2
- Pressure: up to PN420 / S6000


GE5

- Carbon Steel
- Type: ball valve 3 way
- Sizes: from DN6 up to DN13
- Ends: BSP-NPT-SAE
- Pressure: up to PN500


GB1

- Carbon Steel and Stainless Steel
- Type: forged ball valve 2 way
- Sizes: from DN32 up to DN50
- Ends: BSP-NPT-SAE
- Pressure: up to PN420

HYDRAULIC BALL VALVES



GB3

- Carbon Steel and Stainless Steel
- Type: ball valve 3 way
- Sizes: from DN32 up to DN50
- Ends: BSP-NPT
- Pressure: up to PN350



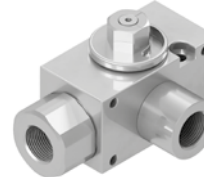
GV2

- Carbon Steel
- Type: ball valve 2 way
- Sizes: from DN6 up to DN32
- Ends: BSP-NPT-*SAE* / ISO6162-1
- Pressure: up to PN500 / S6000



GBF

- Carbon Steel and Stainless Steel
- Type: forged ball valve 2 way
- Sizes: from DN32 up to DN50
- Ends: ISO6162-1/-2, SAEJ518-1/-2
- Pressure: up to PN420 / S6000



GV3

- Carbon Steel
- Type: ball valve 3 way
- Sizes: from DN6 up to DN32
- Ends: BSP-NPT-*SAE* / ISO6162-1
- Pressure: up to PN500 / S6000



GBS

- Carbon Steel and Stainless Steel
- Type: forged ball valve 2 way
- Sizes: from DN32 up to DN50
- Ends: SAE J518
- Pressure: up to PN420 / S6000



GV3K

- Carbon Steel
- Type: ball valve 3 way special seats, zero leakage
- Sizes: from DN10 up to DN20
- Ends: BSP-NPT-*SAE* / ISO6162-1
- Pressure: up to PN500 / S6000



GBF-S

- Carbon Steel and Stainless Steel
- Type: forged ball valve 2 way
- Sizes: from DN32 up to DN50
- Ends: ISO6162-1/-2, SAEJ518-1/-2
- Pressure: up to PN420 / S6000



G3K

- Carbon Steel
- Type: ball valve 3 way
- Sizes: from DN6 up to DN25
- Ends: BSP-NPT
- Pressure: up to PN500



GVS

- Carbon Steel
- Type: ball valve 2 way
- Sizes: from DN13 up to DN40
- Ends: ISO6162-1/-2 (*SAE* J518)
- Pressure: up to PN420 / S3000-S6000



G4K

- Carbon Steel
- Type: ball valve 4 way
- Sizes: from DN6 up to DN25
- Ends: BSP-NPT
- Pressure: up to PN500


GPK2

- Carbon Steel
- Type: manifold
- Sizes: from DN6 up to DN50
- Ends: Drilling pattern Gemels
- Pressure: up to PN500


KITS

- Locking
- Handles
- Pneumatic&Electric Actuators
- Limit Switch


GPK3

- Carbon Steel
- Type: manifold
- Sizes: from DN6 up to DN50
- Ends: Drilling pattern Gemels
- Pressure: up to PN500


TECH

GRC

- Carbon Steel and Stainless Steel
- Type: ball valve 2 way
- Sizes: from DN25 up to DN125
- Ends: ISO6164 (CETOP)
- Pressure: up to PN420 / S6000


GRS

- Carbon Steel and Stainless Steel
- Type: ball valve 2 way
- Sizes: from DN13 up to DN125
- Ends: ISO6162-1 / ISO6162 (SAE J518)
- Pressure: up to PN420 / S6000


GHP

- Carbon Steel and Stainless Steel
- Type: ball valve 2 way
- Sizes: from DN13 up to DN100
- Ends: BSP-NPT
- Pressure: up to PN370



HYDRAULIC VALVES



HYDRAULIC VALVES



VOSE

- Carbon Steel
- Type: Single Effect Overcenter Valve
- Sizes: DN6-DN20
- Ends: BSP-NPT-SAE
- Pressure: up to PN350



VBP

- Carbon Steel

VBPSE

- Type: single pilot operated check valves
- Sizes: from DN6 up to DN50
- Ends: BSP
- Pressure: up to PN350

VBPDE

- Type: double pilot operated check valves
- Sizes: from DN6 up to DN50
- Ends: BSP
- Pressure: up to PN350

VBPDE CEXC

- Type: double pilot operated check valves
- Sizes: from DN6 up to DN50
- Ends: BSP
- Pressure: up to PN350"



VODE

- Carbon Steel
- Type: Double Effect Overcenter Valve
- Sizes: DN6-DN20
- Ends: BSP-NPT-SAE
- Pressure: up to PN350



VRC

- Carbon Steel
- Type: Direct Acting Relief Valve with Manifold
- Sizes: DN6-DN10
- Ends: BSP-NPT-SAE
- Pressure: up to PN350



RF

- Carbon Steel
- Type: check valve flow control
- Sizes: from DN6 up to DN40
- Ends: BSP-NPT
- Pressure: up to PN400



VRM

- Carbon Steel
- Type: Relief Valve in Manifold with Manometer Port
- Sizes: DN10-DN13-DN20
- Ends: BSP-NPT-SAE
- Pressure: up to PN350



BD

- Carbon Steel
- Type: reduce flow control B-directional
- Sizes: from DN6 up to DN40
- Ends: BSP-NPT
- Pressure: up to PN400



VU

- Carbon Steel and Stainless Steel
- Type: check valve
- Sizes: from DN6 up to DN50
- Ends: BSP-NPT-SAE
- Pressure: up to PN500

HYDRAULIC VALVES



GEV

- Carbon Steel
- Type: shuttle valve 3 way
- Sizes: from DN6 up to DN25
- Ends: BSP-NPT-SAE
- Pressure: up to PN500



DDF

- Cast Iron
- Type: 3 ways flow dividers
- Pressure: up to PN300



GPS

- Carbon Steel
- Type: 3-ways single pilot operated check valves with zinc-plated steel body
- Sizes: from DN6 up to DN25
- Ends: BSP
- Pressure: up to PN400



KITS

- Locking
- Handles
- Pneumatic&Electric Actuators
- Limit Switch



VB VUBA

- Carbon Steel
- Type: hose break valve
- Sizes: from DN6 up to DN25
- Ends: BSP-NPT-SAE
- Pressure: up to PN350

VBFB Female insert
VBM Male insert



TECH



SJ

- Carbon Steel
- Type: swivel joint / at 90°
- Sizes: from DN6 up to DN50
- Ends: BSP- NPT (on request)
- Pressure: up to PN400



SJ HD

- Carbon Steel
- Type: swivel joint HD / in line
- Sizes: from DN13 up to DN32
- Ends: BSP - UNF/SAE (on request)
- Pressure: up to PN400





HYDRAULIC SWIVEL JOINTS



HYDRAULIC SWIVEL JOINTS

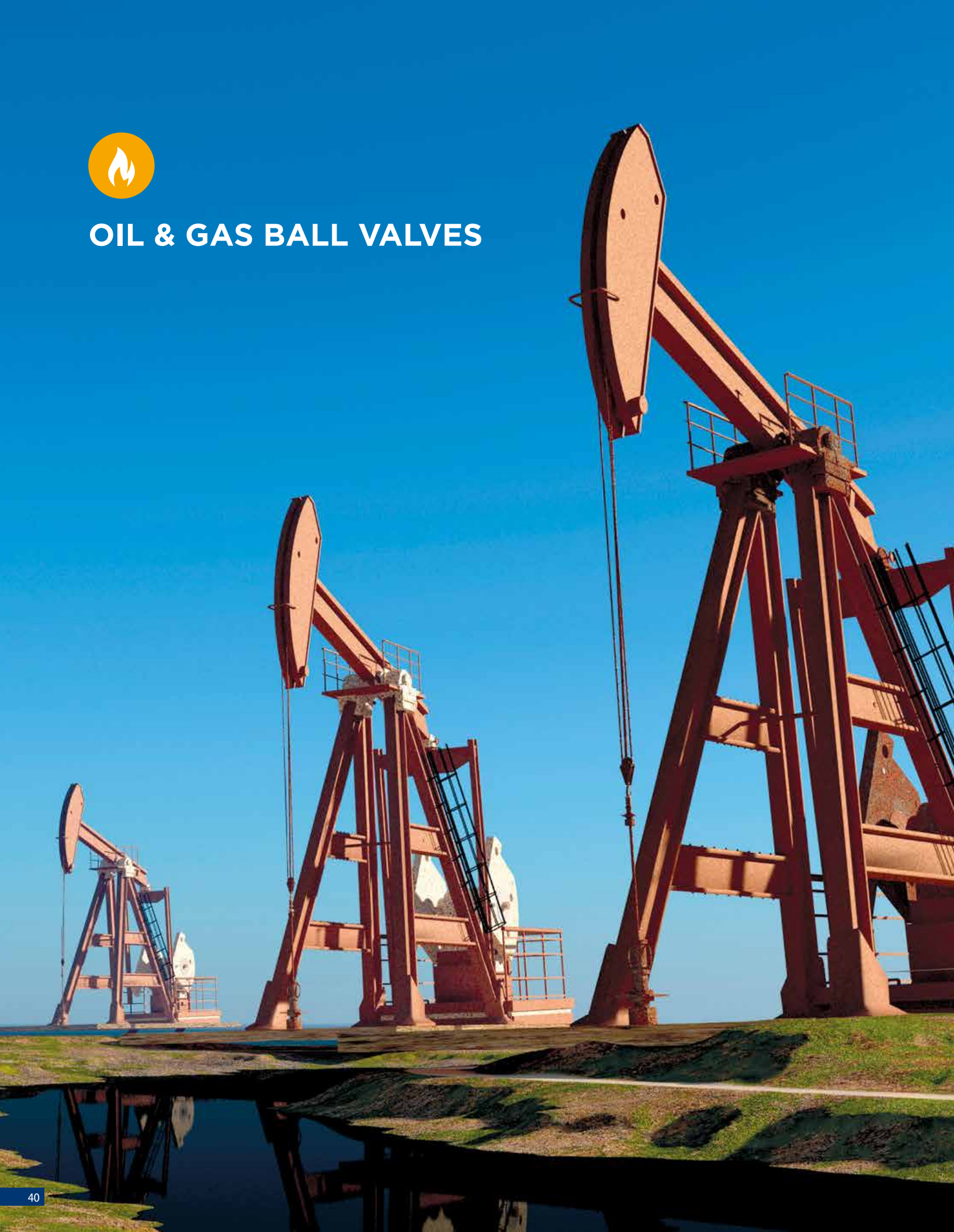


HSJ

- Type: HYDRAULIC SWIVEL JOINTS
- Sizes: from 2WAY up to 22WAY
- Ends: BSP, NPT, SAE, flange
- Pressure: up to PN420



OIL & GAS BALL VALVES



OIL & GAS BALL VALVES

GN

- Carbon Steel and Stainless Steel
- Type: ball valve 2way
- Sizes: from DN6 up to DN50
- Ends: BSP-NPT-SW-SWXT -PE BW
- Pressure: up to PN500 / S6000


SBT

- CS, SS, DSS, ALLOY (Forged)
- Type: ball valve Split Body Trunion
 - Sizes: from DN20 up to DN900
 - Pressure: ANSI 150-2500


GM

- Carbon Steel and Stainless Steel
- Type: ball valve 2way
- Sizes: from DN6 up to DN100
- Ends: BSP-NPT-SW-SWXT -PE BW
- Pressure: up to PN500 / S3000


DBB

- CS, SS, DSS, ALLOY (Forged)
- Type: ball valve Double Block and Bleed
 - Sizes: from DN13 up to DN200
 - Pressure: ANSI 150-2500


SBF-W

- CS, SS, DSS, ALLOY (Forged)
- Type: ball valve Split Body Floating-Wafer type
 - Sizes: from DN13 up to DN150
 - Pressure: ANSI150-600


KITS

- Locking
- Handles
- Pneumatic&Electric Actuators
- Limit Switch

page 489


SBF

- CS, SS, DSS, ALLOY (Forged)
- Type: ball valve Split Body Floating
 - Sizes: from DN13 up to DN150
 - Pressure: ANSI 150-2500


TECH

page 555



GEMELS S.p.A. (Headquarters)

Via Gambirasio, 20/22
24069 Trescore Balneario (Bergamo) - ITALY
tel. (+39) 035 940 445 fax. (+39) 035 945 205
gemels@gemels.it

GEMELS NORTH AMERICA INC.

Billing Address
1800 West Loop South - Suite 1740 - Houston, TX 77027
Warehouse & Distribution Center
35 Watterson St. - Dayton, OH 45417
northamerica@gemels.com
www.gemels.com



gemels.it

