

HYDRAULIC SWIVEL JOINTS
HYDRAULIC QUICK COUPLINGS
HYDRAULIC BALL VALVES



HYDRAULIC



 **GEMELS®**



COMPANY'S FOUNDATION

GEMELS SPA was founded in 1969 as a Company specialized in the designing and manufacturing of ball valves and quick couplings from 1/4" up to 42".



GEMELS SPA has become a worldwide leader in the industrial & hydraulic field and, since 2010, has started to focalize and to invest more and more also in the Oil & Gas field.



GEMELS SPA has also introduced into its range new products regarding Green Power application, as ELECTRIC MOTORS and new other forthcoming projects for the electrification of equipment and machines.

WHERE WE ARE

GEMELS SPA is located in the middle of North Italy, less than 50 km from Milan.
Address: Via Gambirasio, 20/22
24069 Trescore Balneario
(Bergamo) - ITALY

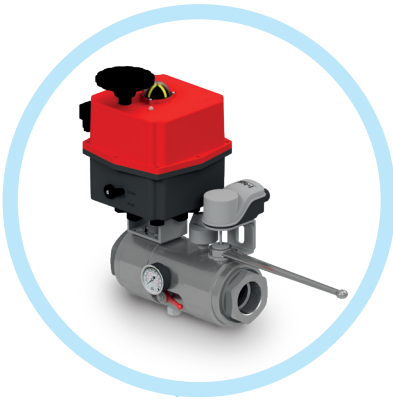
GEMELS NORTH AMERICA INC is located in Dayton, with office and warehouse supplying the American market.
Address:
Billing Address
1800 West Loop South
Suite 1740 - Houston, TX 77027
Warehouse & Distribution Center
35 Watterson St.
Dayton, OH 45417



DESIGN AND PATENT

Thanks to its philosophy, based on lean production, **GEMELS SPA** has specialized over the years in the design and production of valves for special & critical applications, providing customers with lean solutions and customized valves.

Thanks to the R&D department rigorous study of advanced and innovative solutions, **GEMELS SPA** has also obtained 4 patents in Italy and Europe.



R&D

In **GEMELS SPA R&D Department**, our technicians study innovative solutions. In the last years, the Company has been focusing on GREEN POWER ENERGY with new projects in the ELECTRIC field. **GEMELS SPA** introduced three-phase synchronous ELECTRIC MOTORS and other new technological products.

APPLICATIONS & SOLUTIONS

GEMELS SPA electric motors are studied for different applications: agriculture, earth moving, construction, cleaning, material handling, lifting equipment, transfer carts, automotive, e-mobility and many others.



■ HYDRAULIC SWIVEL JOINTS

GEMELS, has in its range HYDRAULIC SWIVEL JOINTS from 2WAY up to 22WAY for different application like drilling rigs, cranes, platforms and excavators. We study internally custom solutions for OEM according to their specific application.

**MORE TYPES
AVAILABLE
FOR DIFFERENT
APPLICATIONS**





Highest reliability

- stator: C40 - aluminium; rotor: S355J2G3 - aluminium.

Working conditions

- mounting position: vertical;
- axial and radial loads: not allowed;
- max rotating speed: 12 rpm;
- max pressure: 420 bar;
- min/max ambient temperatures: -20°C / +60°C;
- max working temperature: 90°C;
- standard working range: -10°C ÷ 80°C;
- rotating/starting torque: according to the design model.

Fluids

- hydraulic oil - DOT 4 - H2O

Surface treatments

- rotor: phosphatizing with manganese - nickel plating ENP
- hard oxidation;
- stator: hard chromium plating - nickel plating ENP
- hard oxidation.

Sealing components

- seals in buna N - Viton - EPDM - special Teflon rings.

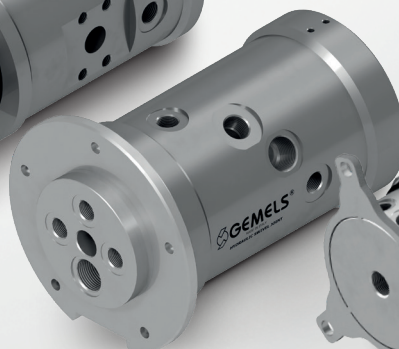
Accessories (slip ring)

- every model can be supplied with electrical swivel joint according to the requirements of the customers.

2 WAY
DRILLING RIG



5 WAY
EXCAVATOR/MOBILE CRANE



18 WAY
TELEHANDLER



■ HYDRAULIC QUICK COUPLINGS

GEMELS, known all over the world in the hydraulic and industrial field, always increases its range of products. For this reason, together with valves, **GEMELS** produces quick couplings for a large sector, such as agriculture.

At the beginning, starting with ISO 7241 / A, ISO 7241 / B, ISO 16028 FLAT FACE, then to models such as ISO 5675 N and NV, PUSH-PULL, BULKHEAD, FLAT FACE CONNECTION UNDER PRESSURE and many others.

**MORE TYPES
AVAILABLE
FOR DIFFERENT
APPLICATIONS**





QUICK COUPLINGS

Carbon Steel / Stainless Steel
Pressure: up to MPa 35 / Psi 5075
Size: up to 2" (DN50)



FLAT FACE
EARTH MOVING



VGA
EARTH MOVING



ISO A
AGRICULTURE



PUSH PULL
AGRICULTURE

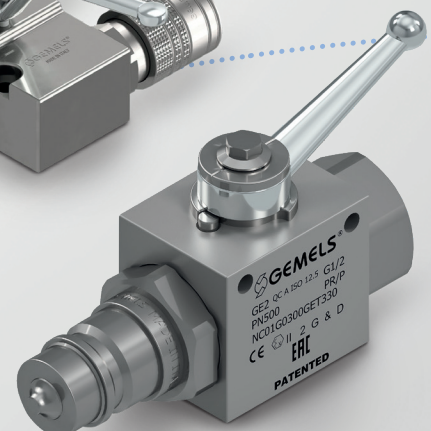
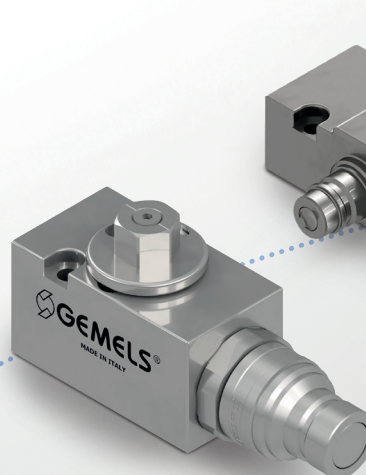


VGB
HIGH-PRESSURE
EQUIPMENT

Valves with integrated QUICK COUPLINGS

Special lean and compact
customized solution studied
for our customers.

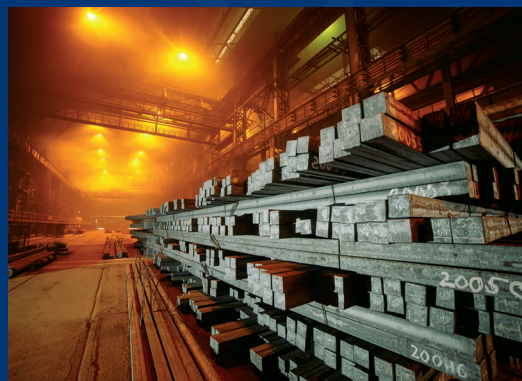
- Reduced costs having one single item in stock.
- No more leakage between fittings and more uniform flow.



■ HYDRAULIC BALL VALVES

For hydraulic/industrial field, since more than 50 years **GEMELS** produces high pressure ball valves, known all over the world as synonym of maximum reliability and high quality. **GEMELS** is one of the World Leader Manufacturer. Thanks to a full package that includes a wide variety of models and to special and customized solutions, our clients and distributors use our valves for different application, like: agriculture, automotive, naval, fire-fighting, CNG.

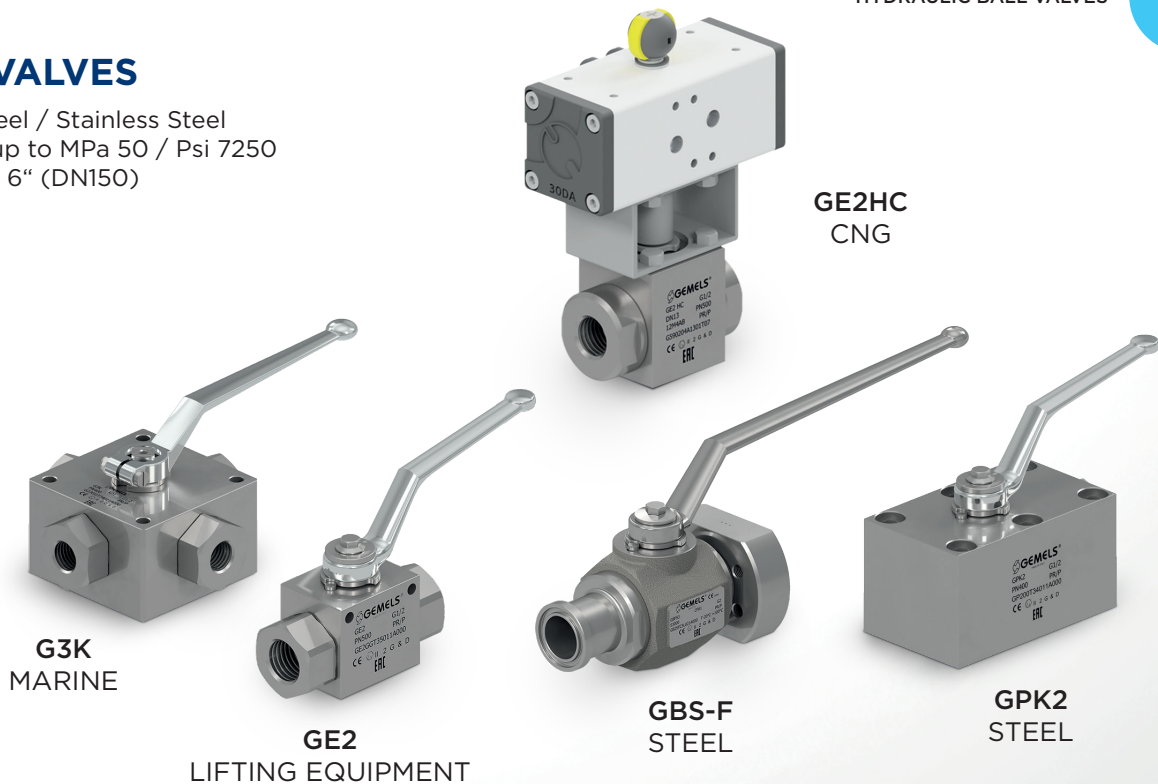
**MORE TYPES
AVAILABLE
FOR DIFFERENT
APPLICATIONS**





BALL VALVES

Carbon Steel / Stainless Steel
Pressure: up to MPa 50 / Psi 7250
Size: up to 6" (DN150)



LEAN CUSTOMIZED SOLUTIONS

GEMELS studies and designs special lean customized solutions for our customers based on the specific requests. Thanks to the close collaboration between **GEMELS** technical department and the engineering department of our customers, we are able to study the best and most suitable solution for the application where our products will be mounted. **GEMELS** can realize prototypes and samples. Our customized solutions can range over different fields, like agriculture, fire-fighting, construction and building, lifting, automotive, steel plant, heavy equipment and marine.



The range















■ HYDRAULIC SWIVEL JOINTS • CUSTOMIZED PRODUCTS from 2way up to 22way.

						
2 way	4 way	5 way	9 way	18 way	18 way	slip ring








■ HYDRAULIC QUICK COUPLINGS

						
FLAT FACE	FFAP	ISO A	PUSH PULL	DV	ISO B	N

■ HYDRAULIC BALL VALVES

						
Customized Lean Solution	GH2	GEM	GE1	GE2	GE2 HC	GE3
						
GBF	GBS	GBF-S	GV2	GV3	G3K	G4K

■ HYDRAULIC VALVES

						
VOSE	VODE	VRC	VRM	VBP	RF	BD



NV



BGF



VGA



VGB



DG



GE2 FF/GE2 A
GE2 PP/GE2 VGA



GE5



GE3K



GEF



GES



GEF-S



GB1



GB3



GPK2



GPK3



GRC



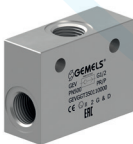
GRS



GHP



VU



GEV



GPS



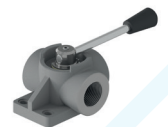
VB VUBA



SJ



SJ HD



DDF



GEMELS S.p.A.

Via Gambirasio, 20/22
24069 Trescore Balneario (Bergamo) - ITALY
tel. (+39) 035 940 445 fax. (+39) 035 945 205
gemels@gemels.it

GEMELS NORTH AMERICA INC.

Billing Address

1800 West Loop South - Suite 1740 - Houston, TX 77027

Warehouse & Distribution Center

35 Watterson St. - Dayton, OH 45417
northamerica@gemels.com
www.gemels.com



gemels.it

