



HYDRAULIC SWIVEL JOINTS

Edition. 21.1

Type

HYDRAULIC SWIVEL
JOINTS

Sizes

from 2WAY up to 22WAY

Ends

BSP, NPT, SAE, flange

Pressure

up to PN420



Highest reliability

- stator: C40 - aluminium; rotor: S355J2G3 - aluminium.

Working conditions

- mounting position: vertical;
- axial and radial loads: not allowed;
- max rotating speed: 12 rpm;
- max pressure: 420 bar;
- min/max ambient temperatures: -20°C / +60°C;
- max working temperature: 90°C;
- standard working range: -10°C ÷ 80°C;
- rotating/starting torque: according to the design model.

Fluids

- hydraulic oil - DOT 4 - H2O

Surface treatments

- rotor: phosphatizing with manganese - nickel plating ENP - hard oxidation;
- stator: hard chromium plating - nickel plating ENP - hard oxidation.

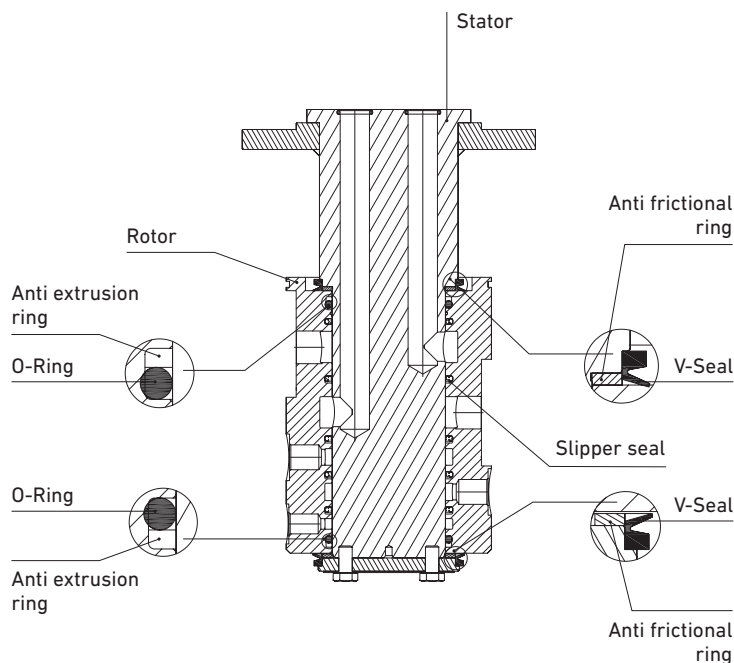
Sealing components

- seals in buna N - Viton - EPDM - special Teflon rings.

Accessories (slip ring)

- every model can be supplied with electrical swivel joint according to the requirements of the customers.

CROSS SECTION



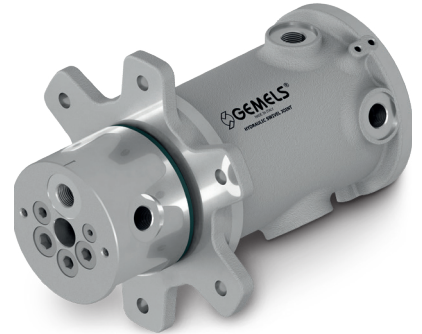
APPLICATIONS & SOLUTIONS



DRILLING RIGS



EXCAVATOR/MOBILE CRANE



UNDERCARRIAGES



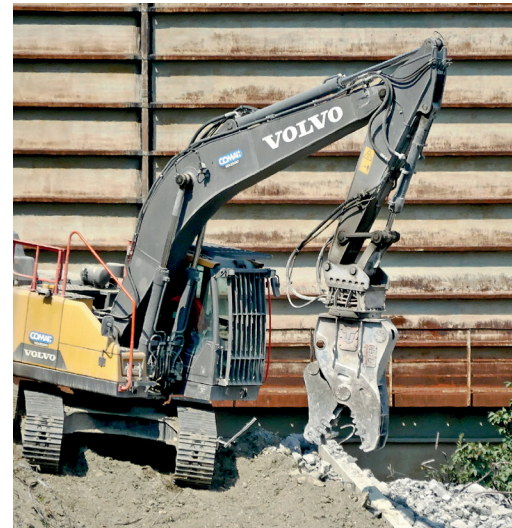
CONCRETE MIXER PUMPS



HYDRAULIC + SLIP RING TELEHANDLER



SLIP RING



COMPOSITION OF HYDRAULIC SWIVEL JOINT

